



**CAPITAL JIG** RSCDS 2009 J 32

1 2 (1) (2) ① X<sub>R</sub> ① ① → ①  
 S ① ② ② X<sub>R</sub> ② ② ← ②  
 SET AND ROTATE

ST<sub>R 3/4</sub> LA ③ 2 ① 3 ST<sub>R 3/4</sub> LA ③ to 2 1 3

**THIRTEEN FOURTEEN (1314)** (Square set) S 64 · R 64

ST<sub>R 3/4</sub> LA ③ 2 ① 3 ST<sub>R 3/4</sub> LA ③ to 2 1 3

ST<sub>R 3/4</sub> PROM RA (to original places)

TR<sub>1/2</sub> TR<sub>1/2</sub> PROM RA (to original places)

TR<sub>1/2</sub> TR<sub>1/2</sub> PROM RA (to original places)

Repeat 3 times to original places

REEL R Bars 1 - 56 of strathspey TR L



**CAPITAL JIG** RSCDS 2009 J 32

1 2 (1) (2) ① X<sub>R</sub> ① ① → ①  
 S ① ② ② X<sub>R</sub> ② ② ← ②  
 SET AND ROTATE

ST<sub>R 3/4</sub> LA ③ 2 ① 3 ST<sub>R 3/4</sub> LA ③ to 2 1 3

**THIRTEEN FOURTEEN (1314)** (Square set) S 64 · R 64

ST<sub>R 3/4</sub> LA ③ 2 ① 3 ST<sub>R 3/4</sub> LA ③ to 2 1 3

ST<sub>R 3/4</sub> PROM RA (to original places)

TR<sub>1/2</sub> TR<sub>1/2</sub> PROM RA (to original places)

TR<sub>1/2</sub> TR<sub>1/2</sub> PROM RA (to original places)

Repeat 3 times to original places

REEL R Bars 1 - 56 of strathspey TR L



**ROYAL YACHT BRITANNIA** XLIII 3 R 40

S ① ② ③ RA LA ① S ① ② ③

ST<sub>R 3/4</sub> LA ③ 2 ① 3 ST<sub>R 3/4</sub> LA ③ to 2 1 3

**ROYAL YACHT BRITANNIA** XLIII 3 R 40

S ① ② ③ RA LA ① S ① ② ③

ST<sub>R 3/4</sub> LA ③ 2 ① 3 ST<sub>R 3/4</sub> LA ③ to 2 1 3

**BEST SET IN THE HALL** XLVI J 32

S ① ② ③ S ① ② ③ S ① ② ③

ST<sub>R 3/4</sub> LA ③ 2 ① 3 ST<sub>R 3/4</sub> LA ③ to 2 1 3

All Chase TR

**BEST SET IN THE HALL** XLVI J 32

S ① ② ③ S ① ② ③ S ① ② ③

ST<sub>R 3/4</sub> LA ③ 2 ① 3 ST<sub>R 3/4</sub> LA ③ to 2 1 3

All Chase TR

**BALMORAL STRATHSPEY** XXII 3 S 32

1 2 & 3 4 RL 1 2 & 3 4 S RA - 2 1 4 3 S X<sub>R</sub> ① ① 1 4 3 A

**BALMORAL STRATHSPEY** XXII 3 S 32

1 2 & 3 4 RL 1 2 & 3 4 S RA - 2 1 4 3 S X<sub>R</sub> ① ① 1 4 3 A

**THE QUEEN'S VISIT** J 40

① X<sub>R</sub> ST<sub>R 3/4</sub> ① ② ③ to ① ② ③ 2s + 1M + 3s 1L ⑤ ⑥ ⑦

S<sub>R</sub> ① ① ① S LA ④ ④ ④ ④ (to 2341)

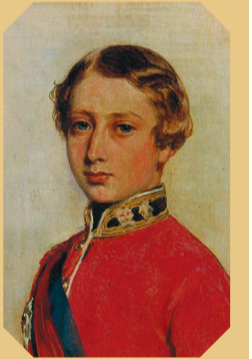
**THE QUEEN'S VISIT** J 40

① X<sub>R</sub> ST<sub>R 3/4</sub> ① ② ③ to ① ② ③ 2s + 1M + 3s 1L ⑤ ⑥ ⑦

S<sub>R</sub> ① ① ① S LA ④ ④ ④ ④ (to 2341)



Prince Albert Edward



Prince Albert Edward

*Extras*

**CRANBERRY TART** Glasspool J 32

① S ① S ① S ① S ① S ① S ① S ① S ① S

① S ① S ① S ① S ① S ① S ① S ① S ① S ① S

2 1 3

*Extras*

**CRANBERRY TART** Glasspool J 32

① S ① S ① S ① S ① S ① S ① S ① S ① S ① S

① S ① S ① S ① S ① S ① S ① S ① S ① S ① S

2 1 3

**MINISTER ON THE LOCH (3 couple set)** Goldring S 32

P → T<sub>B</sub> ← T<sub>B</sub> ① ② ③ ① ② ③ ① ② ③ ① ② ③

Double Fig. off

**MINISTER ON THE LOCH (3 couple set)** Goldring S 32

P → T<sub>B</sub> ← T<sub>B</sub> ① ② ③ ① ② ③ ① ② ③ ① ② ③

Double Fig. off

**REEL OF THE ROYAL SCOTS** RSCDS L R 32

① T<sub>L</sub> ② ② S ③ ① T<sub>R</sub> ③ ② S ① ① T<sub>L</sub> ③ ② S ①

① T<sub>R</sub> ② ② S ③ ① T<sub>L</sub> ③ ② S ①

2 1 3

**REEL OF THE ROYAL SCOTS** RSCDS L R 32

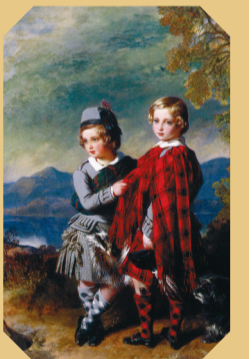
① T<sub>L</sub> ② ② S ③ ① T<sub>R</sub> ③ ② S ① ① T<sub>L</sub> ③ ② S ①

① T<sub>R</sub> ② ② S ③ ① T<sub>L</sub> ③ ② S ①

2 1 3



Princes Alfred and Arthur



Princes Alfred and Arthur

*Winterchen  
and the Royals*



*The Dances*

*Winterchen  
and the Royals*



*The Dances*