

Winterchen
and the Royals



The Dances

KENDALL'S HORNPIPE Gr 22 J32

RL	↔	X	↑		$\begin{matrix} 2-1 \\ \downarrow \\ 3-1 \end{matrix}$ T _{1/2}
----	---	---	---	--	---

DUKE AND DUCHESS OF EDINBURGH xxxix 7 R40

-1 2 3- ↓ T _B		$\begin{matrix} 2 \\ \circlearrowleft \\ 1 \end{matrix}$ RA	$\begin{matrix} 2 \\ \circlearrowright \\ 1 \end{matrix}$ LA	L+1	⑥
-----------------------------	--	---	--	-----	---

skip obge

OUR HIGHLAND QUEEN S40

$\begin{matrix} 1 & 2 & 3 & 4 \\ \circlearrowleft & \circlearrowright & \circlearrowleft & \circlearrowright \end{matrix}$	$\begin{matrix} 1 & & 3 \\ 2 & T_B & \downarrow & \uparrow & T_B & \downarrow & \uparrow & T_B \end{matrix}$
$\begin{matrix} 1 & & 3 \\ T_B & \downarrow & \uparrow & T_L & \downarrow & \uparrow & T_B \end{matrix}$	$\begin{matrix} 2 \\ \circlearrowleft \\ 1 \end{matrix}$ T _R R
corners pass and turn	
$\begin{matrix} 3+2 & 1+4 \\ S & R & A \end{matrix}$	$\begin{matrix} 3 & 2 & 1 & 4 \\ \uparrow & \downarrow & \downarrow & \uparrow \end{matrix}$



Victoria

HAZEL TREE Drewry J32

$\begin{matrix} 1 & 2 \\ \circlearrowleft & \circlearrowright \end{matrix}$	$\begin{matrix} 2 & 1 \\ T_R & T_L \end{matrix}$	$\begin{matrix} R & L \\ \circlearrowleft & \circlearrowright \end{matrix}$	$\begin{matrix} 2 & 3 & 2 & 1 & 3 \\ 2 & \circlearrowleft & 1 & \circlearrowright & 3 \end{matrix}$ T _R
ESPAGNOLE			

WHITE ROSE OF SCOTLAND S32

S ↑ X _R	$\begin{matrix} \circlearrowleft & \circlearrowright \\ \circlearrowleft & \circlearrowright \end{matrix}$	R	$\begin{matrix} 2 & 3 & 2 & 3 \\ 3 & 1 & 1 & 3 & 3 & 1 & 1 & 3 \end{matrix}$
$\begin{matrix} \uparrow \\ \square \end{matrix}$	(1) (1)	(L) (L)	$\begin{matrix} 2 & 3 & 2 & 3 \\ \circlearrowleft & \circlearrowright & \circlearrowleft & \circlearrowright \end{matrix}$

ROUND REEL OF EIGHT (Square set) xxvii 7 R88

ALL □ 4	ALL ◁ 4	ALL -CHAIN- S	ALL -CHAIN- S
← 3	← 1 3	1 3	2 4 1 3 2 4 1 3 2 4
① →	③ →	T _R	PROM R RLRLRLRL ⑧
③ ←	① ←	(Antiook Alle. hold)	16 bars

Dinner

COCKET HAT XLIV 5 J40

S ↑ ↓ ↑	$\begin{matrix} \circlearrowleft & \circlearrowright \\ \circlearrowleft & \circlearrowright \end{matrix}$	$\begin{matrix} 3 & 1 & 2 \\ \circlearrowleft & \circlearrowright & \circlearrowleft \end{matrix}$ RA	$\begin{matrix} 2 & 1 \\ \circlearrowleft & \circlearrowright \end{matrix}$
$\begin{matrix} 2 & 1 & 3 \\ \circlearrowleft & \circlearrowright & \circlearrowleft \end{matrix}$ RA	$\begin{matrix} 2 & 1 & 3 \\ \circlearrowleft & \circlearrowright & \circlearrowleft \end{matrix}$ RA	6 slip steps	Chase antiookwise to 2 1 3

CAPE TOWN WEDDING xxxix 4 S32

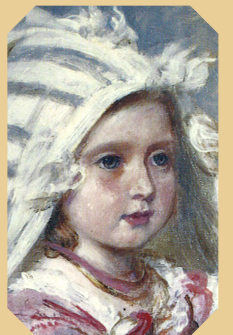
$\begin{matrix} 1 & 2 \\ \circlearrowleft & \circlearrowright \end{matrix}$	$\begin{matrix} 1 & 2 & 3 \\ \circlearrowleft & \circlearrowright & \circlearrowleft \end{matrix}$ X _R	T _R 1/2	$\begin{matrix} 1 & 2 & 3 \\ \circlearrowleft & \circlearrowright & \circlearrowleft \end{matrix}$
$\begin{matrix} 1 & 2 & 3 \\ \circlearrowleft & \circlearrowright & \circlearrowleft \end{matrix}$ X _L	S	Cast by right from circle to original place	1 2 KNOT

BLACK MOUNTAIN REEL (5 couples) Haynes R32

X _R ↑	$\begin{matrix} 2 & 1 \\ \circlearrowleft & \circlearrowright \end{matrix}$	X _L L+1	$\begin{matrix} \circlearrowleft & \circlearrowright \\ \circlearrowleft & \circlearrowright \end{matrix}$
$\begin{matrix} 2 & 1 & 3 \\ \circlearrowleft & \circlearrowright & \circlearrowleft \end{matrix}$ RA	$\begin{matrix} 4 & 3 & 2 & 1 \\ \circlearrowleft & \circlearrowright & \circlearrowleft & \circlearrowright \end{matrix}$ RA	$\begin{matrix} 5 & 4 & 3 & 2 & 1 \\ \circlearrowleft & \circlearrowright & \circlearrowleft & \circlearrowright & \circlearrowleft \end{matrix}$ RA	T _L ↑



Prince Albert Edward



Princess Beatrice

NURSERYMAN XXXVII 7 J32

S 1 2 3 1 2 3

2 1 3 2 1 3

SS 1 2 3 1 2 3

RA 1 2 3 1 2 3

LA 2 1 3 2 1 3

TR 1/4 1 2 3 1 2 3



ROYAL WEDDING RSCDS 1982 S32

STB: 1 2 3 1 2 3

TB TR S S TR S S

2 1 3 TB

WICKED WILLY (UILLIAM DONA) R32

X 1 2 3 1 2 3

2 1 3 2 4 3

1 1 4 1 1 S 4

2 1 3 2 4 3

4 1 1 3 4 3

LA RL RL

2 1 3 2 1 3

2 TR 3

CAPITAL JIG RSCDS 2009 J32

S 1 2 3 1 2 3

2 1 3 2 1 3

ST R 3/4 LA 1 2 3

2 1 3 2 1 3

10 2 1 3



ROYAL YACHT BRITANNIA XLIII 3 R40

S 1 2 3 1 2 3

RA LA 1 2 3 1 2 3

1 2 3 1 2 3

BEST SET IN THE HALL XLVI J32

S 1 2 3 1 2 3

S 1 2 3 1 2 3

S 1 2 3 1 2 3

All Chase TR

BALMORAL STRATHSPEY XXII 3 S32

1 2 3 4 RL

1 2 3 4 S RA

2 1 4 3 S XR

1 4 3 A

THE QUEEN'S VISIT R40

XR ST R 3/4

2 1 3 2 1 3

2s + 1M + 3s 1L

SR 1 2 3 1 2 3

LA 1 2 3 1 2 3

(to 2341)

Extras

THIRTEEN FOURTEEN (1314) (Square set) S64 - R64

STRAHSPEY ALL later looking on a circle

TR 1/4 PROM RA TR 1/2

TR 1/2 TR 1/4 PROM RA TR ST L

Repeat 3 times to original places

REEL R 1 - 56 of strathspey TR L

CRANBERRY TART Glasspool J32

1 S 2 S

1 S 2 S

2 1 3 2 1 3

2 1 3 2 1 3

MINISTER ON THE LOCH (3 couple set) Goldring S32

P TB TB

1 2 3 1 2 3

1 2 3 1 2 3

REEL OF THE ROYAL SCOTS RSCDS L R32

1 TL 2 S 3 S

1 TR 2 S 3 S

1 TL 2 S 3 S

2 1 3 TR TR



Prince Albert Edward



Princes Alfred and Arthur